

# Framework 24

Preliminary Sea Scallop Specifications for 2013-2015  
Update and review of Committee Motions (Sept. 18, 2012)



## Framework 24 - Purpose and Need

- The purpose of this action is to prevent overfishing and improve yield-per-recruit from the fishery.
- The primary need for this action is to set specifications: day-at-sea (DAS) allocations, general category fishery allocations and area rotation schedule for the 2013-2015
- In addition, the Council added a handful of other issues to be addressed
  - Refine YT bycatch measures
  - Provide more flexibility for IFQ leasing
  - Expand observer set-aside program to include LAGC vessels in open areas

# Refine YT Flounder bycatch measures

- Modify GB access area seasonal closures – currently closed 4.5 months (Feb1-June14)
  - Wide range of options under consideration
- Address YT flounder bycatch in the LAGC fishery
  - Develop AMs for that fleet (*still under development*)
- Adjust timing of YT AM
  - Subsequent year if reliable info, if not following year

## Improve flexibility of LAGC IFQ

- Allow leasing/transfer after fishing year has begun
- Allow leasing/transfer after vessel has started fishing

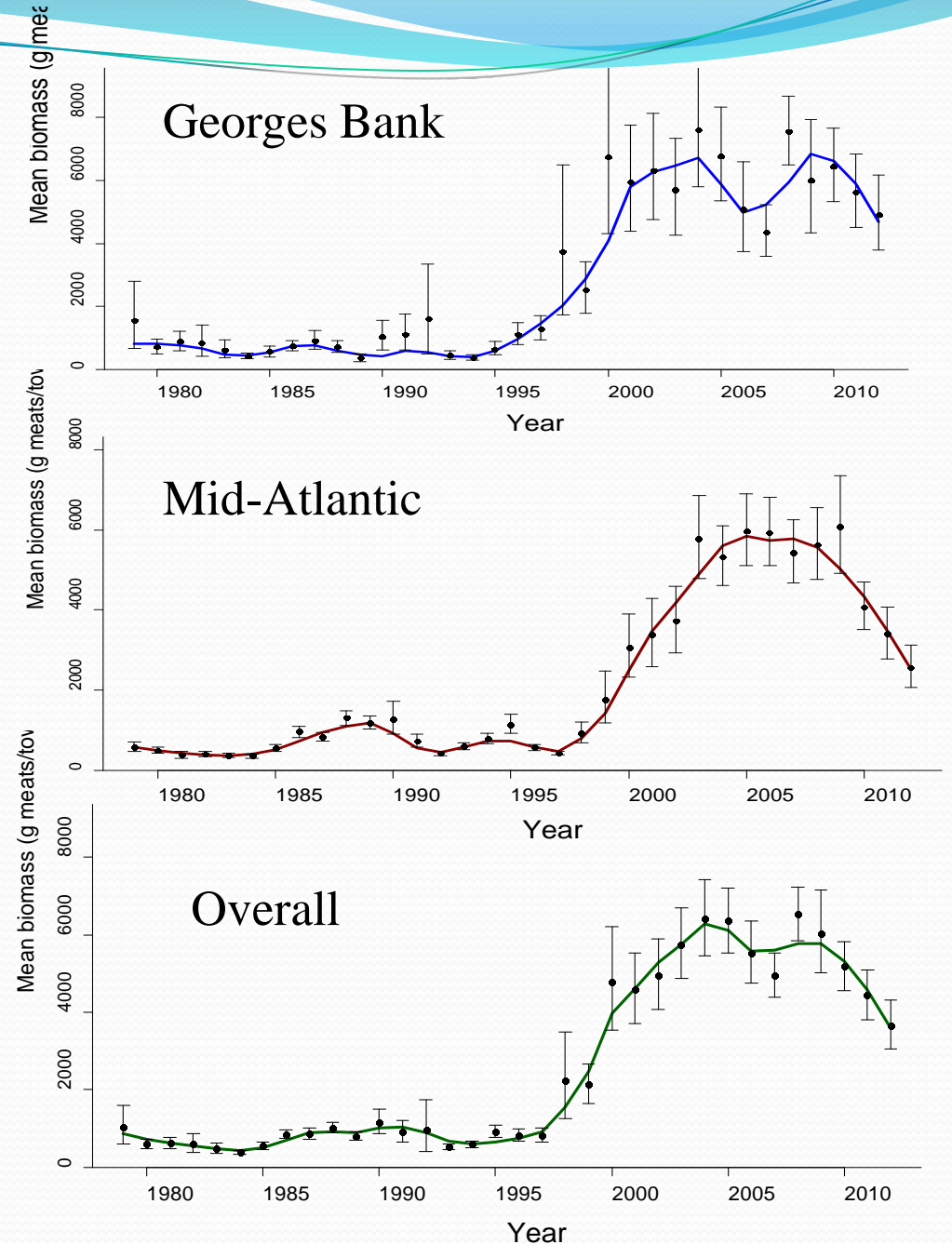
Expand current observer set-aside program to include LAGC trips in open areas



# Part 1: Survey results and Preliminary Specifications

PDT combined survey results from 4 surveys: NEFSC, SMAST video, VIMS dredge and Habcam

Survey index declining, especially in the MA



# Status of the stock

- PDT updated CASA model – realized biomass and F
- **Overfishing is not occurring and not overfished**

	MA 2012 Estimate	GB 2012 Estimate	Total 2012 Estimate	Stock Status Reference Points
Biomass (in 1000 mt)	36	83	119	$\frac{1}{2}$ Bmsy = 62,679
F	0.89	0.18	0.34	OFL = 0.38

Bmsy = 125,000 mt

# OFL and ABC

- Presented to the SSC on September 13, 2012
  - OFL - equivalent to the catch associated with an overall fishing mortality rate of 0.38
  - ABC - 25% chance of exceeding OFL is the control rule and risk is evaluated in terms the probability of overfishing compared to the fraction loss of yield
  - SSC approved values below

	2013	2014	2015
OFL	31,555	35,110	38,074
ABC	27,370	30,353	34,395



# Recent Performance

	OFL (including discards)	ABC (including discards)	Discards (at ABC)	ABC available to fishery (after discards removed)	Landings	Catch (landings plus assumed discards)	% of ABC caught
<b>2011</b>	37,148	31,279	4,009	27,270	26,513	30,522	97.6%
<b>2012</b>	39,449	33,234	4,266	28,968	26,513*	30,779	92.6%

\* 2012 Landings is a projection since FY not over. Assumed to equal 2011 Landings (26,513 mt).

- Estimated landings at MSY (SARC 50) = 24,975 mt
- Mean landings from 2003-2011 = 26,272 mt
- Resource not overfished because: unusually high recruitment in MA; opening of GB areas (“reserve”); and biomass above MSY so could fish above MSY
- However, recruitment has been lower past few years and biomass is below MSY (125,000 mt) – thus need to reduce catch to prevent overfishing

# Alternative 1

- Close ETA and Delmarva in 2013 to protect recruitment
- Set F in other access areas to appropriate levels
- Set open area catch at max level (F=0.38)
- 2013: 2 trips at reduced possession limit and 33 DAS
- 2014: 2 trips at reduced possession limit and 31 DAS

FY	CAI	CAII	NLS	HC	ETA	DMV	Total AA catch (mil lbs)	Total AA catch per vessel
2013	open	open		open			7.8	26,000
2014		open	open			open	9.8	30,000
2015		open	open		open	open	17.0	54,000


Allocations (lb) Proposed in Framework 24			
	2013	2014	2015
OFL	69,566,153 (31,555 mt)	77,403,506 (35,110 mt)	83,937,940 (38,074 mt)
ABC (after discards removed)	46,305,418 (21,004 mt)	52,242,406 (23,697 mt)	59,932,051 (27,185 mt)
incidental	50,000 (23 mt)	50,000 (23 mt)	50,000 (23 mt)
RSA	1,250,000 (567 mt)	1,250,000 (567 mt)	1,250,000 (567 mt)
OBS	463,054 (210 mt)	522,424 (237 mt)	599,321 (272 mt)
LA sub-ACL (94.5% of ACL after set asides and incidental removed)	42,091,860 (19,093 mt)	47,646,208 (21,612 mt)	54,840,256 (24,875 mt)
LA sub-ACT	33,782,722 (15,324 mt)	34,012,962 (15,428 mt)	40,684,519 (18,454 mt)
IFQ-only (5% of ACL)= sub- ACL = ACT	2,227,083 (1010 mt)	2,520,963 (1,143 mt)	2,901,601 (1316 mt)
IFQ + LA (0.5% of ACL)=sub-ACL=ACT	222,708 (101 mt)	252,096 (114 mt)	290,160 (131 mt)

Projected catch for 2013 and 2014 about 40 million pounds –30% reduction from 2011 and 2012. ABC/ACL = 46 million in 2013 and 52 million in 2014

# Alternative 2

- Same as Alt 1 except each FT LA vessel only allocated 1 AA trips at 18,000 lbs. in HC or CA2
- 1.8 million less overall but constant possession limit
- CA1 remains closed
- AP and Cmte rejected this alternative and recommended modification of Alt 1 instead: same number of trips in 2013 but from 4 areas (NL)
- Future does look brighter – very high recruitment in MA could support higher catches in 2015 and 2016

- PDT still working on final projections
  - YT catch could be a constraining factor
  - October – Scallop PDT and GF Cmte
  - November – AP and Scallop Cmte meetings
- 
- Questions on scallop survey results and preliminary specifications??



Part 2: Scallop AP and Cmte Meetings  
September 17/18, 2012  
New Bedford, MA

## Scallop AP and Cmte Meetings (Sept 17/18)

- Continue development of FW24 alternatives
- Committee passed 10 motions and 3 items by consensus
  - 7 motions clarified existing alternatives
  - 1 motion requesting Emergency Action to close Elephant Trunk
  - 2 motions about 2013 priorities

# Motion #5 – Request Emergency Action

Adopted Motion 9 from AP Meeting – close ETA using existing boundaries until FW24 implemented

## Rationale:

1. Very high recruitment in ETA – may be second highest on record
2. High level of recruitment was unforeseen until 2012 surveys
3. The PDT recommends closing this area in 2013 in FW24, but that will not be effective until May 2013
4. Currently an open area and industry reports increased fishing levels in that area
5. A similar issue came up with Delmarva several years ago and future yields may have been compromised because of delayed closure



# Motion #9 – Recommendation for 2013 priorities

Adopted Motion 15 from AP Meeting – initiate in 2013 a FW to set FY2014 specifications

## Rationale:

1. This is a complex fishery that is very area specific; therefore using update survey info is critical
2. There is variation from year to year, and since there are surveys in many areas each year the plan could adapt.
3. It is a very high revenue fishery, desire to get allocations as close to optimal levels to help generate revenue in the region overall
4. Uncertainty about high recruitment in MA: will they grow faster from warmer weather or will mortality be higher than expected?
5. Uncertainty about status of EFH closed areas. If all or some of those areas available for fishing in 2014, the Council may want to include specific allocations in FW25.

*Council may want to delay discussion of this item until Priorities Discussion*

# Motion #10 – Scallop access areas in EFH Omnibus Amendment

## Rationale:

1. Scallops are a natural resource so there is variability in the abundance and fishery. Based on the survey results it appears we are facing a few years of reduced catches. One way to mitigate these impacts would be to fish in EFH areas since there is a very high percent of exploitable biomass in those areas (about 30%).
2. The Omnibus is already looking at opening the current EFH areas in CA1 and CA2, but will not specify the access/allocation for scallop fishing.
3. Adding it the Omnibus may be the most expeditious way since they would be implemented simultaneously.

Scallop Committee was not certain of the impacts of this motion on the EFH timeline and Committee workloads

*Council may want to delay discussion of this item until Priorities Discussion or under the Habitat Report*